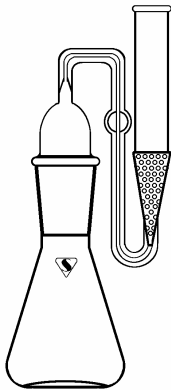
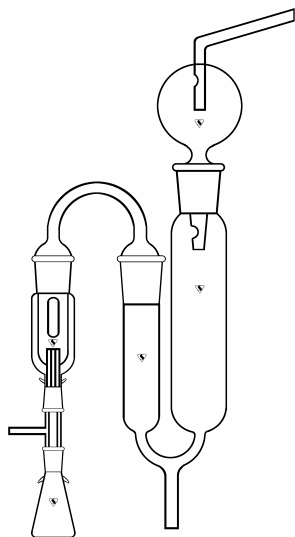


# GENERAL GLASSWARE



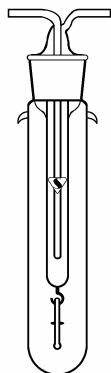
**17-1000: ARSINE GENERATOR** - For use in the determination of the presence of arsenic in various substances. Apparatus consists of one sample flask and one absorber tube. Glass beads may be added to the absorber tube to aid mixing.

Code #	Description
01	Complete Assembly
02	Absorber Tube with $\overline{\text{S}}$ 24/40 joint.
03	125ml Erlenmeyer Flask with $\overline{\text{S}}$ 24/40 joint.
04	#28 Clamp
05	1lb. Package of 4mm Glass Beads



**17-1020: SULFUR DETERMINATION APPARATUS** - For use in the determination of sulfur in petroleum products in accordance with ASTM D1266. Apparatus consists of a sample flask, burner, chimney, fritted absorber tube and trap.

Code #	Description
01	Complete Assembly
02	Flask
03	Burner $\overline{\text{S}}$ 24/40 joint
04	Chimney $\overline{\text{S}}$ 24/40 joint
05	Absorber Tube $\overline{\text{S}}$ 24/40 joint and coarse frit.
06	Trap $\overline{\text{S}}$ 24/40



**17-1040: SILVER CORROSION APPARATUS** - Used for the determination of corrosiveness of jet fuel towards silver in accordance with IP227/77. Consists of one 350ml test tube, one cold finger condenser and one glass cradle. The silver strip is optional.

Code #	Description
01	Complete Assembly
02	Test Tube
03	Condenser
04	Cradle
05	Silver Strip

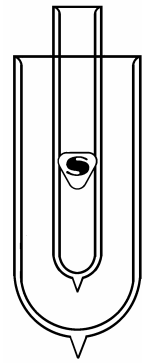


**17-1060: CARBON RESIDUE BULB** - Used in the determination of carbon residue in petroleum products. Bulb measures approximately 25 mm OD by 57 mm OAH. Ref: ASTM D524.

To Order, Call Specialty Glass, Inc. Toll Free 1-800-899-2137

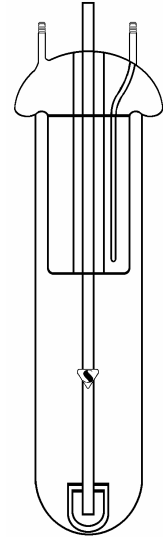
**17-1080: FREEZE POINT APPARATUS** - For use in determining the freeze point of separated solids in aviation fuel. Ref. ASTM D2386. Consists of one outer Dewar flask and one inner Dewar flask.

Code #	Description
01	Inner Tube
02	Outer Tube



**18-1000: OXIDATION TEST APPARATUS** - For the determination of oxidation inhibitor life of turbine oils. Ref. ASTM D943. Consists of one oil tube, one oxygen delivery tube and one water-cooled condenser.

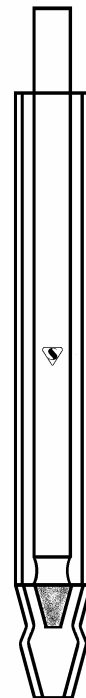
Code #	Description
01	Complete Assembly
02	600mm x 45mm O.D. Oil Tube
03	Oxygen Delivery Tube
04	Condenser



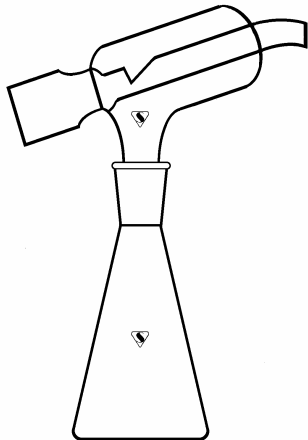
**18-1020: COLIWASA DRUM SAMPLER** - Features a ground glass joint that offers positive retention of sample.

Code #	Length
01	43"
02	72"
03	96"

Custom Lengths Available Upon Request

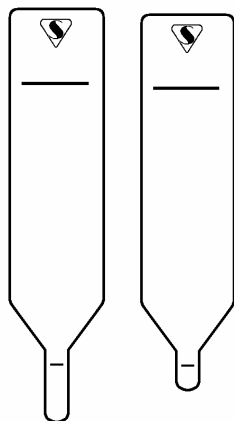


# GENERAL GLASSWARE



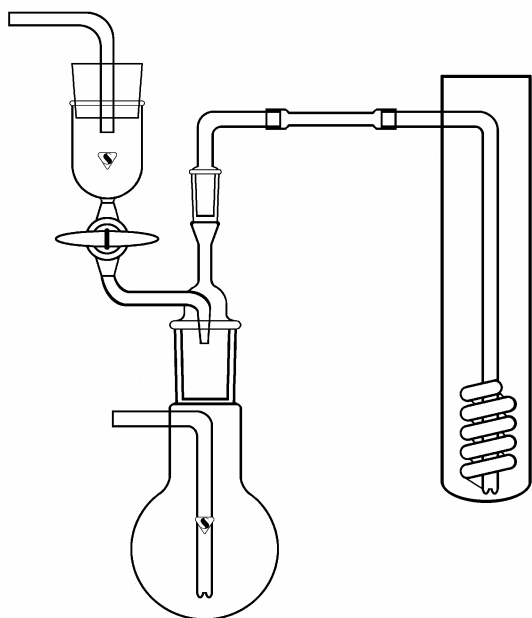
**18-1040: TILTING PIPETTE DISPENSER** - Tilting dispenser head with  $\nabla$  inner joint delivers fixed volume. Water calibrated with stainless steel springs.

Complete Code #	Capacity ml	Flask ml
01	1	250
02	2	250
03	3	250
04	5	500
05	10	500
06	15	500
07	20	500
08	25	500
09	30	1000
10	50	1000
11	100	1000



**18-1060: EVAPORATOR TUBE** - "Turbo", used with automated evaporates.

Code #	Description
01	½ ml Tip
02	1 ml Tip



**18-1060: TRACE SULFUR APPARATUS, RAINEY NICKLE METHOD** - VOP Method 357. Apparatus consists of a funnel, 100ml flask, elbow adapter, condenser tube and stopper.

Code #	Description	$\nabla$ Joint
01	Funnel	24/40
02	100ml Flask	24/40
03	Elbow Adapters	
04	Condenser Tube	
05	Stopper	

To Order, Call Specialty Glass, Inc. Toll Free 1-800-899-2137